

4 GROOVE MODEL SHOWN

SPECIFICATIONS - DIMENSIONS (INCHES)

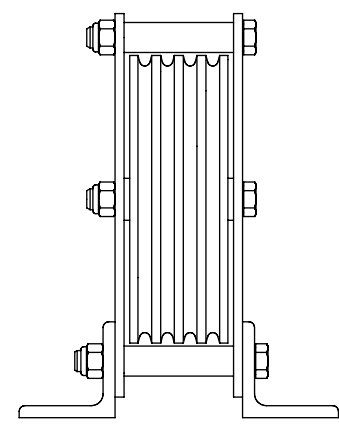
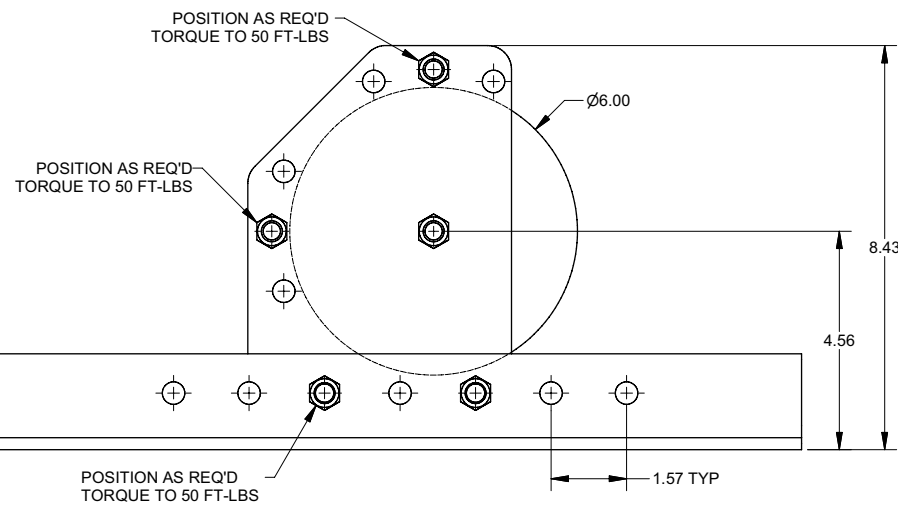
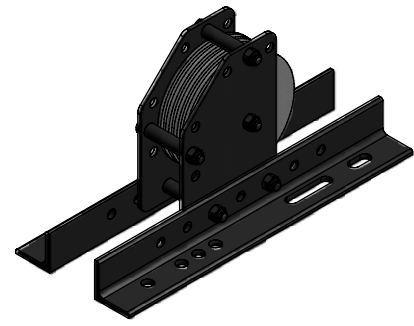
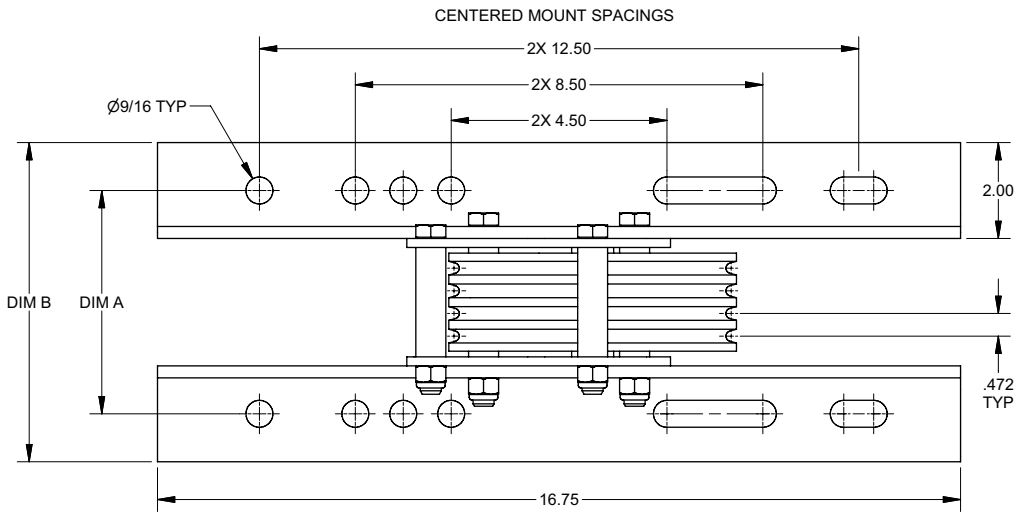
MODEL	GROOVES	ROPE SIZE	WLL (LBS)	DIM A	DIM B	WEIGHT
8SA4-S1G12	1	Ø1/8	300	3.48	5.48	12.4 LBS
8SA4-S2G12	2	Ø1/8	600	3.48	5.48	12.4 LBS
8SA4-S3G12	3	Ø1/8	600	3.71	5.71	12.7 LBS
8SA4-S4G12	4	Ø1/8	600	4.19	6.19	13.1 LBS
8SA4-S5G12	5	Ø1/8	600	4.19	6.19	13.1 LBS

NOTES:

- WORKING LOAD LIMITS (WLL) * :
 - MAY EXCEED CAPACITY OF THE ROPE.
 - USE ROPE MANUFACTURER'S RATING AND SAFETY FACTOR TO DETERMINE LOAD LIMIT.
 - ARE FOR UNITS MOUNTED USING STANDARD DESIGN AND CONSTRUCTION.
 - ARE BASED ON CABLES WRAPPED 90 DEGREES AROUND THE SHEAVES.
 - CONTACT FACTORY FOR OTHER CONDITIONS.
- MOUNTING HARDWARE MUST BE DISTRIBUTED EVENLY ON BOTH ANGLES.
 - MINIMUM OF 4 ATTACHMENT POINTS.
- CONTACT FACTORY FOR NON-STANDARD GROOVE OR MOUNTING REQUIREMENTS.

NOT FOR CONSTRUCTION

THIS PRINT IS THE PROPERTY OF THERN AND MUST NOT BE REPRODUCED EITHER IN FULL OR IN PART WITHOUT WRITTEN APPROVAL BY THERN.				TSE THERN STAGE EQUIPMENT		5712 INDUSTRIAL PARK ROAD WINONA, MN 55987 PHONE 1-800-553-2204 FAX 1-807-454-5282	
DESCRIPTION BLOCK W/ ANGLES - BALL BEARING						TOLERANCES UNLESS SPECIFIED FRAC. ± 1" ANGLE ± 5° DO NOT SCALE DRAWING	
MODEL 8SA4-S SERIES						DRAWING NUMBER C4523	
DRAWN BY JCA	DATE 8/22/2008	WEIGHT N/A	SCALE NTS	REVISION	SHEET 1 OF 1		



4 GROOVE MODEL SHOWN

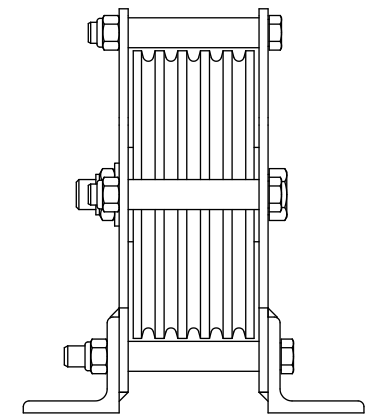
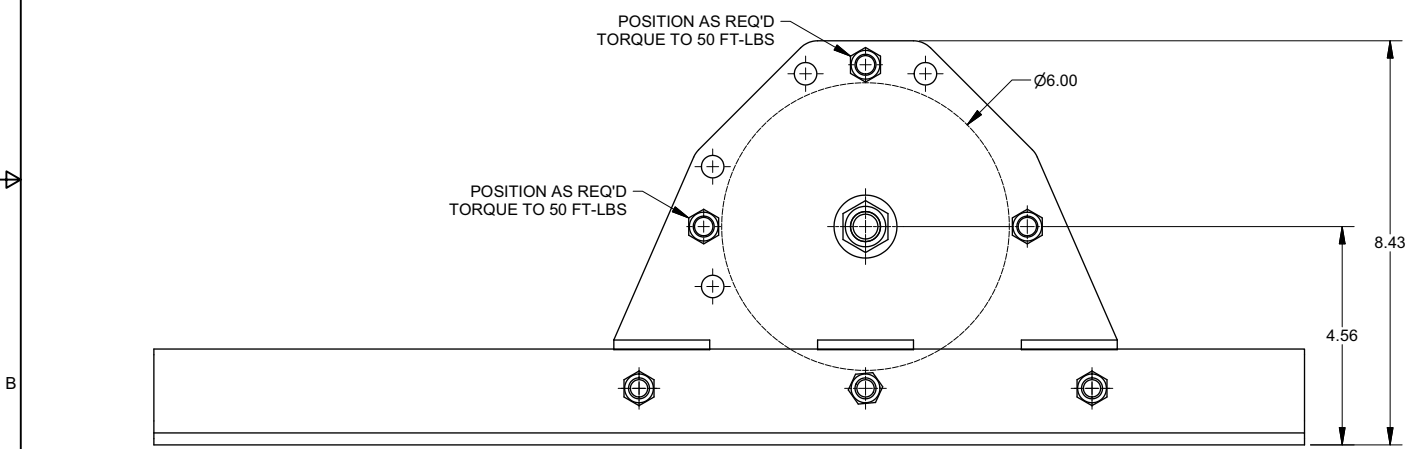
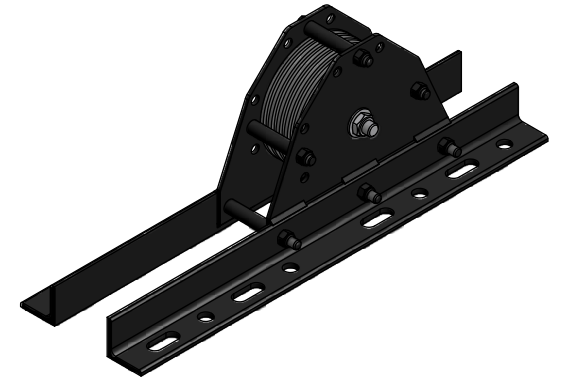
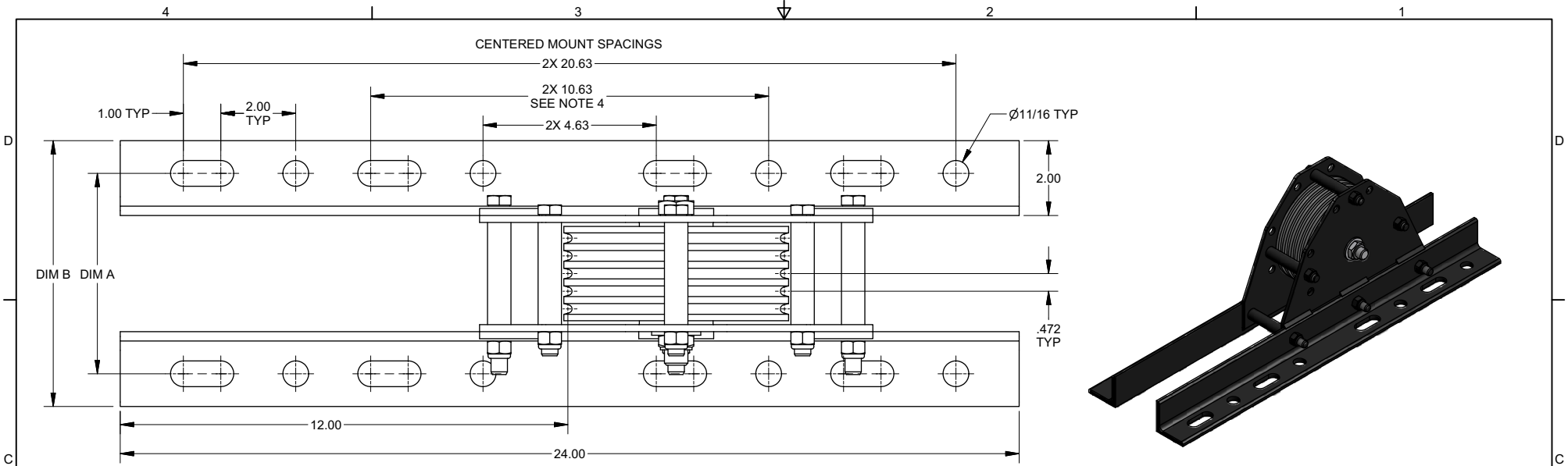
SPECIFICATIONS - DIMENSIONS (INCHES)

MODEL	GROOVES	ROPE SIZE	WLL (LBS) *	DIM A	DIM B	WEIGHT
8SA6-S1G19	1	Ø3/16	600	3.48	5.48	14.6 LBS
8SA6-S2G19	2	Ø3/16	600	3.71	5.71	14.9 LBS
8SA6-S3G19	3	Ø3/16	600	4.19	6.19	15.7 LBS
8SA6-S4G19	4	Ø3/16	1200	4.66	6.66	16.5 LBS
8SA6-S5G19	5	Ø3/16	1200	5.13	7.13	17.2 LBS
8SA6-S6G19	6	Ø3/16	1200	5.60	7.60	18.0 LBS
8SA6-S7G19	7	Ø3/16	1200	6.08	8.08	18.7 LBS
8SA6-S8G19	8	Ø3/16	1200	6.55	8.55	19.4 LBS
8SA6-S9G19	9	Ø3/16	1200	7.02	9.02	20.0 LBS

- NOTES:
- WORKING LOAD LIMITS (WLL) * :
 - MAY EXCEED CAPACITY OF THE ROPE.
 USE ROPE MANUFACTURER'S RATING AND SAFETY FACTOR TO DETERMINE LOAD LIMIT.
 - ARE FOR UNITS MOUNTED USING STANDARD DESIGN AND CONSTRUCTION.
 - ARE BASED ON CABLES WRAPPED 90 DEGREES AROUND THE SHEAVES.
 - CONTACT FACTORY FOR OTHER CONDITIONS.
 - MOUNTING HARDWARE MUST BE DISTRIBUTED EVENLY ON BOTH ANGLES.
 - MINIMUM OF 4 ATTACHMENT POINTS.
 - CONTACT FACTORY FOR NON-STANDARD GROOVE OR MOUNTING REQUIREMENTS.

NOT FOR CONSTRUCTION

THIS PRINT IS THE PROPERTY OF TERN AND MUST NOT BE REPRODUCED EITHER IN FULL OR IN PART WITHOUT WRITTEN APPROVAL BY TERN.				TSE STAGE EQUIPMENT		5712 INDUSTRIAL PARK ROAD WINONA, MN 55987 PHONE 1-800-553-2204 FAX 1-507-454-5282	
DESCRIPTION BLOCK W/ ANGLES - BALL BEARING						TOLERANCES UNLESS SPECIFIED FRAC. ± 1" ANGLE ± 5" DO NOT SCALE DRAWING	
MODEL 8SA6-S SERIES						DRAWING NUMBER C4460	
DRAWN BY JCA	DATE 5/9/2008	WEIGHT N/A	SCALE NTS	REVISION	SHEET 1 OF 1		



5 GROOVE MODEL SHOWN

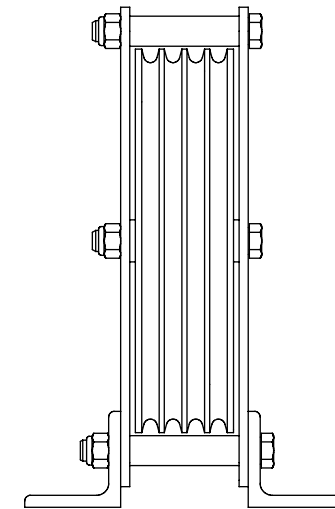
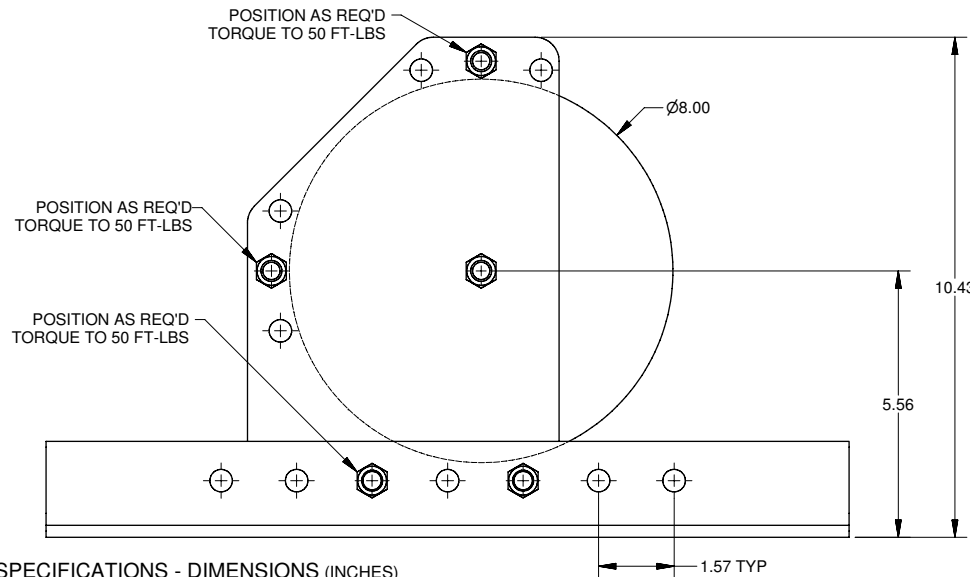
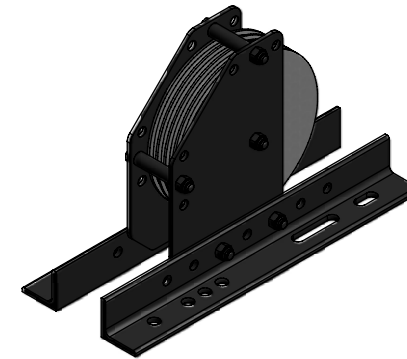
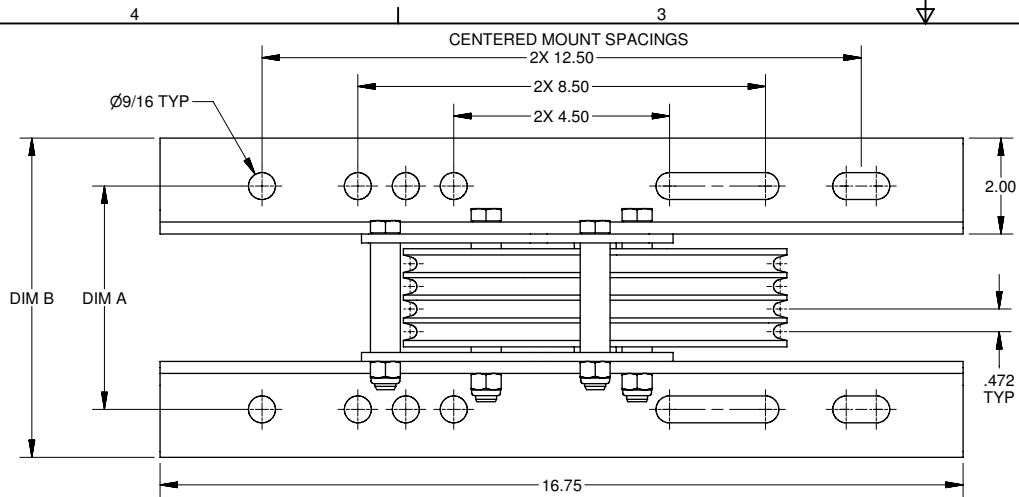
- NOTES:
- WORKING LOAD LIMITS (WLL) * :
 - MAY EXCEED CAPACITY OF THE ROPE.
 - USE ROPE MANUFACTURER'S RATING AND SAFETY FACTOR TO DETERMINE LOAD LIMIT.
 - ARE FOR UNITS MOUNTED USING STANDARD DESIGN AND CONSTRUCTION.
 - ARE BASED ON CABLES WRAPPED 90 DEGREES AROUND THE SHEAVES.
 - CONTACT FACTORY FOR OTHER CONDITIONS.
 - MOUNTING HARDWARE MUST BE DISTRIBUTED EVENLY ON BOTH ANGLES.
 - MINIMUM OF 4 ATTACHMENT POINTS.
 - POSITION ANGLES CENTERED BETWEEN MOUNTING POINTS.
 - CONTACT FACTORY FOR NON-STANDARD GROOVE OR MOUNTING REQUIREMENTS.
 - CONTACT FACTORY WHEN UNDER-HUNG MOUNT SPACING IS GREATER THAN 11.0 INCHES.

SPECIFICATIONS - DIMENSIONS (INCHES)

MODEL	GROOVES	ROPE SIZE	WLL (LBS) *	DIM A	DIM B	WEIGHT
8SA6-T3G19	3	Ø3/16	3000	4.44	6.19	23.3 LBS
8SA6-T4G19	4	Ø3/16	3000	4.91	6.66	24.2 LBS
8SA6-T5G19	5	Ø3/16	3000	5.38	7.13	25.1 LBS
8SA6-T6G19	6	Ø3/16	3000	5.85	7.60	26.0 LBS
8SA6-T7G19	7	Ø3/16	3000	6.33	8.08	26.9 LBS
8SA6-T8G19	8	Ø3/16	3000	6.80	8.55	27.8 LBS
8SA6-T9G19	9	Ø3/16	3000	7.27	9.02	28.5 LBS

NOT FOR CONSTRUCTION

THIS PRINT IS THE PROPERTY OF TERN AND MUST NOT BE REPRODUCED EITHER IN FULL OR IN PART WITHOUT WRITTEN APPROVAL BY TERN.		TSE TERN STAGE EQUIPMENT		5712 INDUSTRIAL PARK ROAD WINONA, MN 55987 PHONE 1-800-553-2204 FAX 1-507-454-5282	
DESCRIPTION BLOCK W/ ANGLES - TPR BEARING				TOLERANCES UNLESS SPECIFIED FRAC. ± 1" ANGLE ± 5" DO NOT SCALE DRAWING	
MODEL 8SA6-T SERIES				DRAWING NUMBER C4557	
DRAWN BY JCA	DATE 1/20/2009	WEIGHT N/A	SCALE NTS	REVISION	SHEET 1 OF 1



4 GROOVE MODEL SHOWN

SPECIFICATIONS - DIMENSIONS (INCHES)

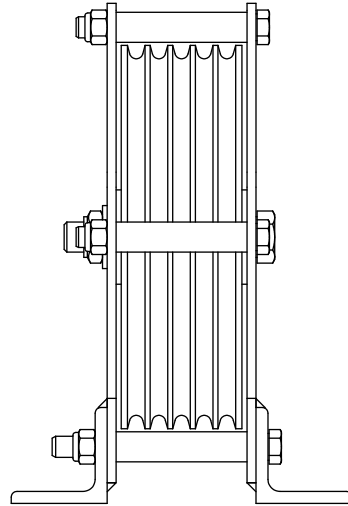
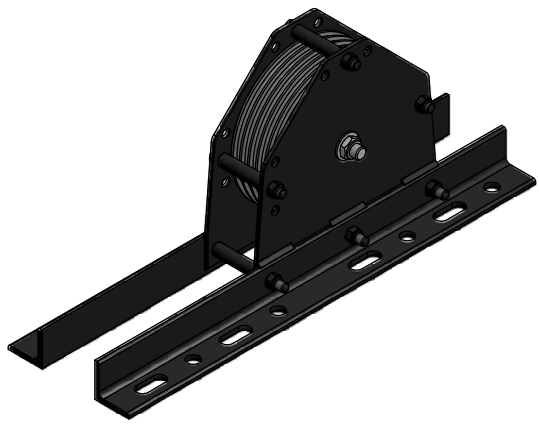
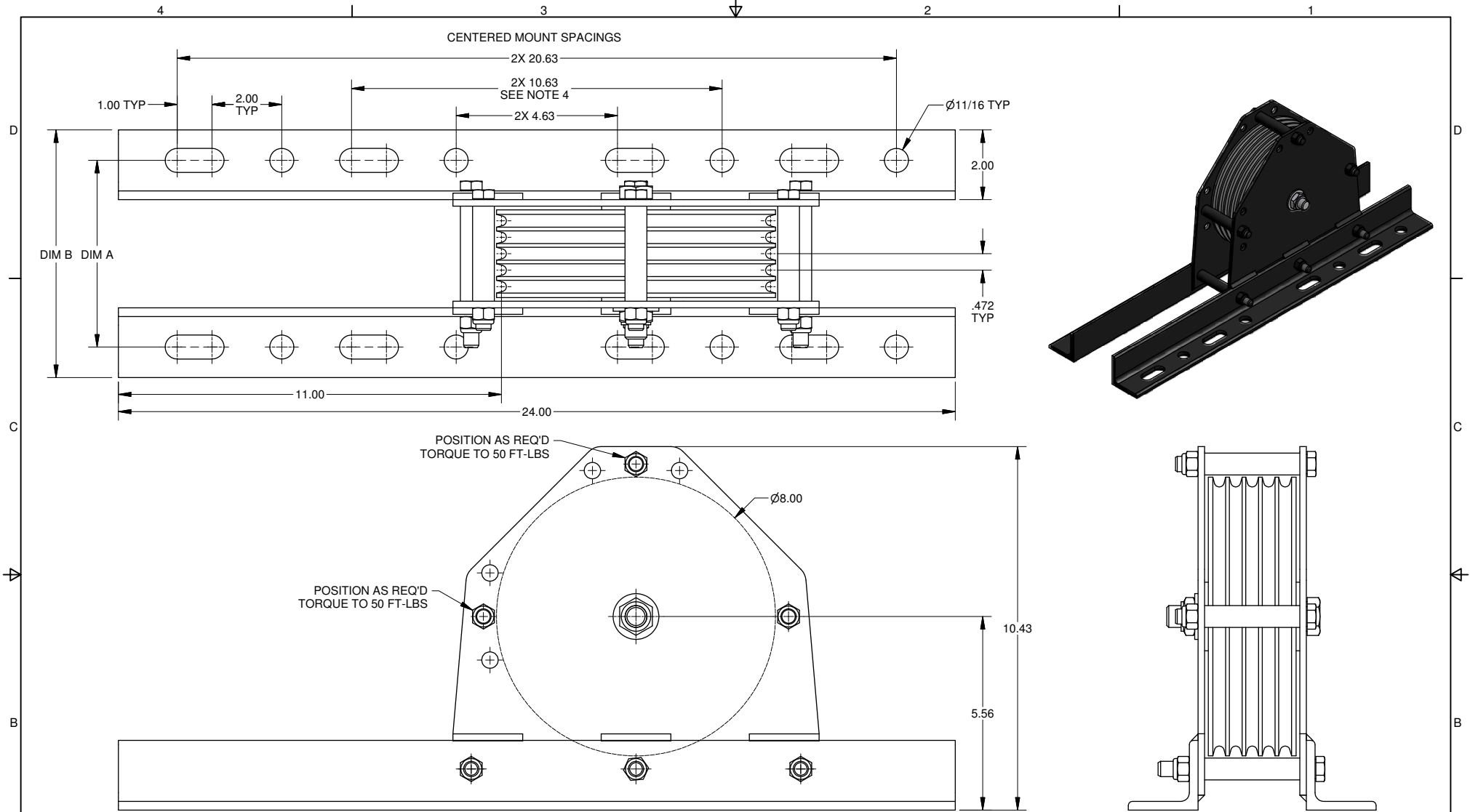
MODEL	GROOVES	ROPE SIZE	WLL (LBS) *	DIM A	DIM B	WEIGHT
8SA8-S1G19	1	Ø3/16	600	3.48	5.48	17.2 LBS
8SA8-S2G19	2	Ø3/16	600	3.71	5.71	17.7 LBS
8SA8-S3G19	3	Ø3/16	600	4.19	6.19	18.8 LBS
8SA8-S4G19	4	Ø3/16	1200	4.66	6.66	20.1 LBS
8SA8-S5G19	5	Ø3/16	1200	5.13	7.13	21.3 LBS
8SA8-S6G19	6	Ø3/16	1200	5.60	7.60	22.4 LBS
8SA8-S7G19	7	Ø3/16	1200	6.08	8.08	23.5 LBS
8SA8-S8G19	8	Ø3/16	1200	6.55	8.55	24.6 LBS
8SA8-S9G19	9	Ø3/16	1200	7.02	9.02	25.7 LBS
8SA8-S1G25	1	Ø1/4	600	3.48	5.48	17.2 LBS
8SA8-S2G25	2	Ø1/4	600	3.71	5.71	17.7 LBS
8SA8-S3G25	3	Ø1/4	600	4.19	6.19	18.8 LBS
8SA8-S4G25	4	Ø1/4	1200	4.66	6.66	20.0 LBS
8SA8-S5G25	5	Ø1/4	1200	5.13	7.13	21.1 LBS
8SA8-S6G25	6	Ø1/4	1200	5.60	7.60	22.2 LBS
8SA8-S7G25	7	Ø1/4	1200	6.08	8.08	23.3 LBS
8SA8-S8G25	8	Ø1/4	1200	6.55	8.55	24.4 LBS
8SA8-S9G25	9	Ø1/4	1200	7.02	9.02	25.4 LBS

NOTES:

- WORKING LOAD LIMITS (WLL) * :
 - MAY EXCEED CAPACITY OF THE ROPE.
 USE ROPE MANUFACTURER'S RATING AND SAFETY FACTOR TO DETERMINE LOAD LIMIT.
 - ARE FOR UNITS MOUNTED USING STANDARD DESIGN AND CONSTRUCTION.
 - ARE BASED ON CABLES WRAPPED 90 DEGREES AROUND THE SHEAVES.
 - CONTACT FACTORY FOR OTHER CONDITIONS.
- MOUNTING HARDWARE MUST BE DISTRIBUTED EVENLY ON BOTH ANGLES.
 - MINIMUM OF 4 ATTACHMENT POINTS.
- CONTACT FACTORY FOR NON-STANDARD GROOVE OR MOUNTING REQUIREMENTS.

NOT FOR CONSTRUCTION

THIS PRINT IS THE PROPERTY OF TERN AND MUST NOT BE REPRODUCED EITHER IN FULL OR IN PART WITHOUT WRITTEN APPROVAL BY TERN.				TSE STAGE EQUIPMENT		5712 INDUSTRIAL PARK ROAD WINONA, MN 55987 PHONE 1-800-553-2204 FAX 1-507-454-5282	
DESCRIPTION BLOCK W/ ANGLES - BALL BEARING						TOLERANCES UNLESS SPECIFIED FRAC. ± 1" ANGLE ± 5° DO NOT SCALE DRAWING	
MODEL 8SA8-S SERIES						DRAWING NUMBER C4480	
DRAWN BY JCA	DATE 6/30/2008	WEIGHT N/A	SCALE NTS	REVISION	SHEET 1 OF 1		



5 GROOVE MODEL SHOWN

SPECIFICATIONS - DIMENSIONS (INCHES)

MODEL	GROOVES	ROPE SIZE	WLL (LBS) *	DIM A	DIM B	WEIGHT
8SA8-T3G19	3	Ø3/16	3000	4.44	6.19	27.1 LBS
8SA8-T4G19	4	Ø3/16	3000	4.91	6.66	28.4 LBS
8SA8-T5G19	5	Ø3/16	3000	5.38	7.13	29.7 LBS
8SA8-T6G19	6	Ø3/16	3000	5.85	7.60	31.0 LBS
8SA8-T7G19	7	Ø3/16	3000	6.33	8.08	32.3 LBS
8SA8-T8G19	8	Ø3/16	3000	6.80	8.55	33.6 LBS
8SA8-T9G19	9	Ø3/16	3000	7.27	9.02	34.8 LBS
8SA8-T3G25	3	Ø1/4	3000	4.44	6.19	27.0 LBS
8SA8-T4G25	4	Ø1/4	3000	4.91	6.66	28.3 LBS
8SA8-T5G25	5	Ø1/4	3000	5.38	7.13	29.6 LBS
8SA8-T6G25	6	Ø1/4	3000	5.85	7.60	30.9 LBS
8SA8-T7G25	7	Ø1/4	3000	6.33	8.08	32.1 LBS
8SA8-T8G25	8	Ø1/4	3000	6.80	8.55	33.4 LBS
8SA8-T9G25	9	Ø1/4	3000	7.27	9.02	34.5 LBS

NOTES:

- WORKING LOAD LIMITS (WLL) * :
 - MAY EXCEED CAPACITY OF THE ROPE.
 USE ROPE MANUFACTURER'S RATING AND SAFETY FACTOR TO DETERMINE LOAD LIMIT.
 - ARE FOR UNITS MOUNTED USING STANDARD DESIGN AND CONSTRUCTION.
 - ARE BASED ON CABLES WRAPPED 90 DEGREES AROUND THE SHEAVES.
 - CONTACT FACTORY FOR OTHER CONDITIONS.
- MOUNTING HARDWARE MUST BE DISTRIBUTED EVENLY ON BOTH ANGLES.
 - MINIMUM OF 4 ATTACHMENT POINTS.
 - POSITION ANGLES CENTERED BETWEEN MOUNTING POINTS.
- CONTACT FACTORY FOR NON-STANDARD GROOVE OR MOUNTING REQUIREMENTS.
- CONTACT FACTORY WHEN UNDER-HUNG MOUNT SPACING IS GREATER THAN 11.0 INCHES.

NOT FOR CONSTRUCTION

THIS PRINT IS THE PROPERTY OF THERN AND MUST NOT BE REPRODUCED EITHER IN FULL OR IN PART WITHOUT WRITTEN APPROVAL BY THERN.		TSE THERN STAGE EQUIPMENT		5712 INDUSTRIAL PARK ROAD WINONA, MN 55987 PHONE 1-800-553-2204 FAX 1-507-454-5282	
DESCRIPTION BLOCK W/ ANGLES - TPR BEARING				TOLERANCES UNLESS SPECIFIED FRAC. ± 1" ANGLE ± 5" DO NOT SCALE DRAWING	
MODEL 8SA8-T SERIES				DRAWING NUMBER C4555	
DRAWN BY JCA	DATE 1/14/2009	WEIGHT N/A	SCALE NTS	REVISION	SHEET 1 OF 1